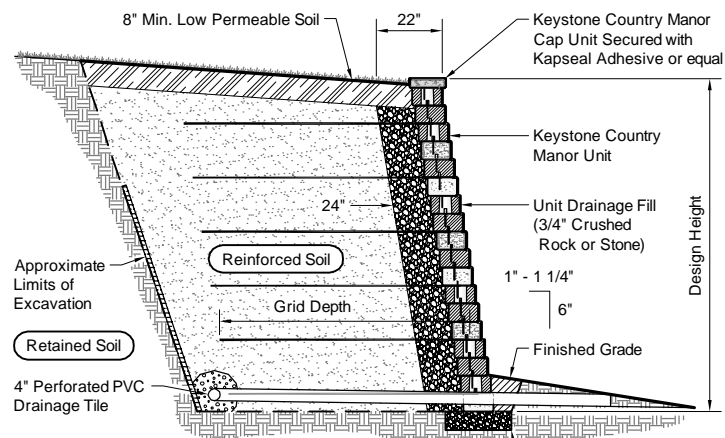


Note:
When site conditions require, wrap drainage tile in 3/4" aggregate and filter fabric with drainage composite or aggregate back drain system, as directed by geotechnical engineer.

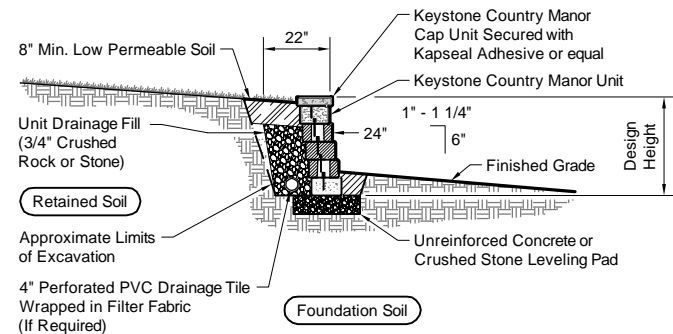
*** Note:**
Center pin hole walls shall be constructed with positive batter by tilting units back towards fill on leveling pad.

Typical Reinforced Wall Section
Country Manor Unit - Near Vertical Setback



Note:
When site conditions require, wrap drainage tile in 3/4" aggregate and filter fabric with drainage composite or aggregate back drain system, as directed by geotechnical engineer.

Typical Reinforced Wall Section
Country Manor Unit - 1° Setback

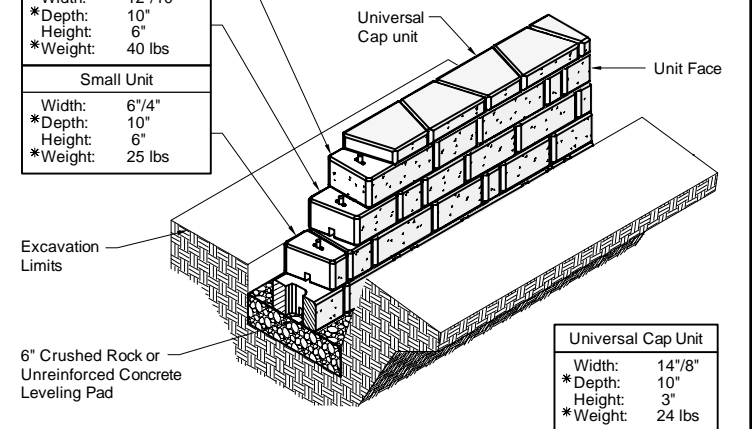


Typical Gravity Wall Section
Country Manor Unit - 1° Setback

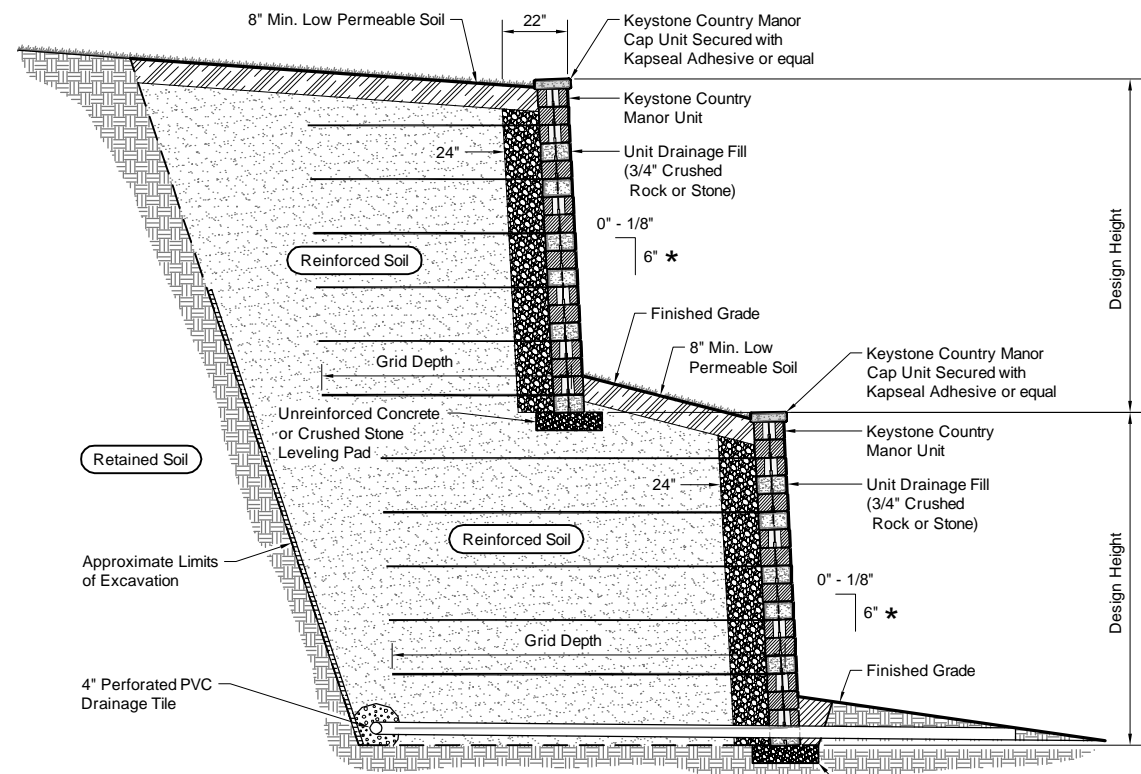
Large Unit	
*Width:	16"/14"
*Depth:	10"
*Weight:	60 lbs
Medium Unit	
*Width:	12"/10"
*Depth:	10"
*Weight:	40 lbs
Small Unit	
*Width:	6"/4"
*Depth:	10"
*Weight:	25 lbs

Base Leveling Pad Notes:

- The leveling pad is to be constructed of crushed stone or 2,000 psi± unreinforced concrete
- The base foundation is to be approved by the site geotechnical engineer prior to placement of the leveling pad.



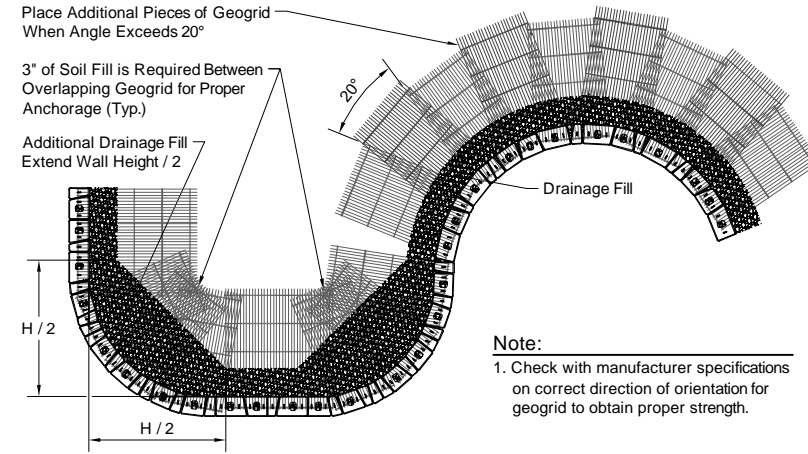
Country Manor Unit/Base Pad Isometric Section View
*Dimensions & Weight May Vary by Region



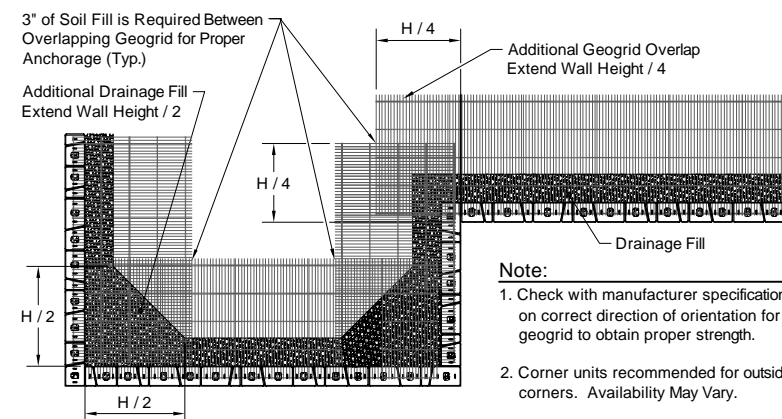
Note:
When site conditions require, wrap drainage tile in 3/4" aggregate and filter fabric with drainage composite or aggregate back drain system, as directed by geotechnical engineer.

*** Note:**
Center pin hole walls shall be constructed with positive batter by tilting units back towards fill on leveling pad.

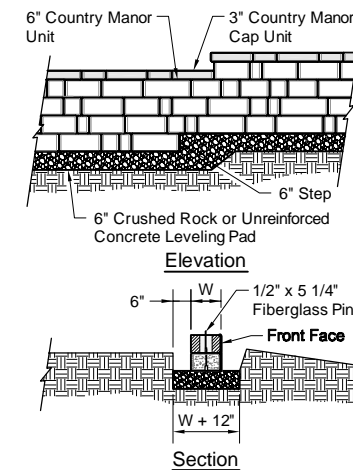
Typical Reinforced Tiered Wall Section
Country Manor Unit - Near Vertical Setback



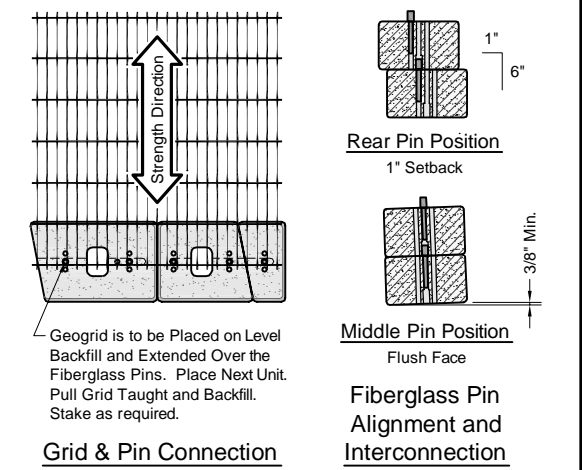
Geogrid Installation on Curves



Geogrid Installation at Corners



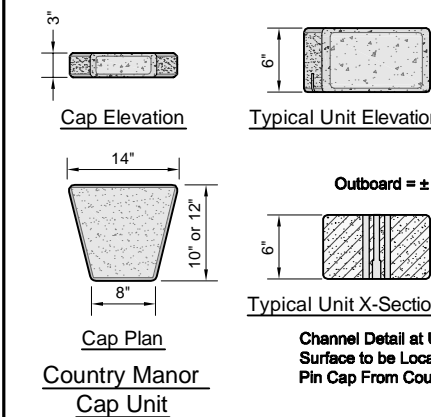
Leveling Pad and Cap Step Detail



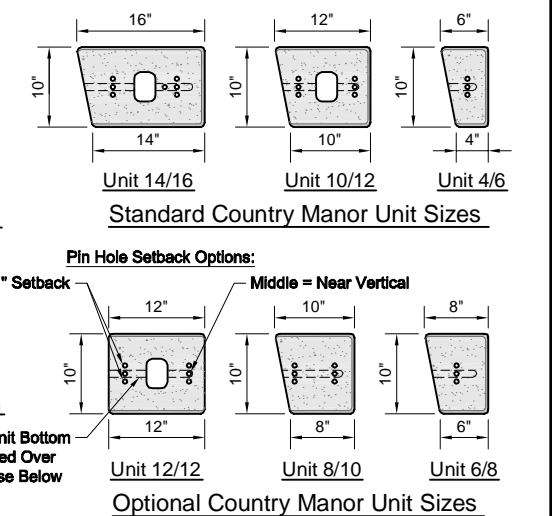
Grid & Pin Connection

Fiberglass Pin Alignment and Interconnection

*** All dimensions are nominal and may vary by region. All units not available in all locations.**



Country Manor Cap Unit



Copyright 2003 Keystone Retaining Wall Systems

Design is for internal stability of the KEYSTONE wall structure only. External stability, including but not limited to foundation and slope stability is the responsibility of the Owner. The design is based on the assumption that the materials within the retained mass, methods of construction, and quality of materials conform to KEYSTONE's specification for this project.

This drawing is being furnished for this specific project only. Any party accepting this document does so in confidence and agrees that it shall not be duplicated in whole or in part, nor disclosed to others without the consent of Keystone Retaining Wall Systems, Inc.

No.	Date	Revision	By



Designed By: RKM	Title: Country Manor Unit - Details	Date:
Checked By: CDM	Project: Keystone Retaining Wall Systems Typical Wall Details	Project No:
Scale: No Scale		Drawing No: