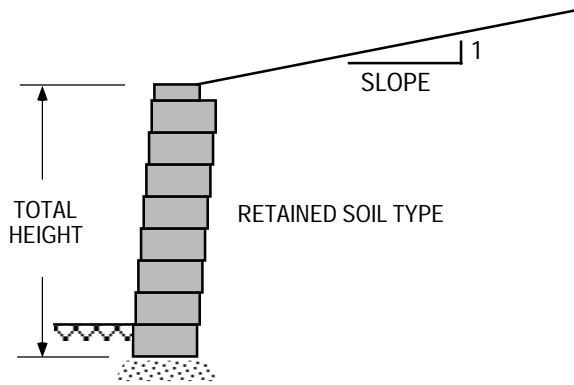
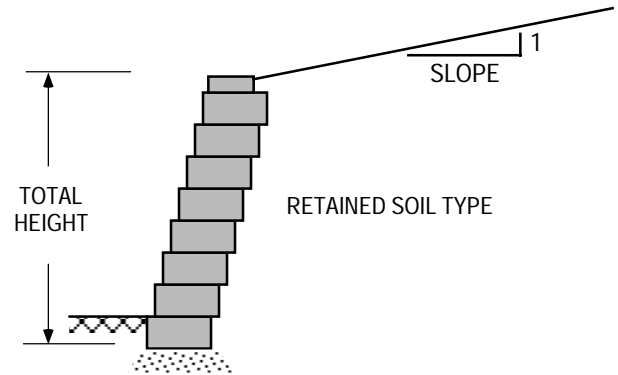


NOTES:

- ▶ Wall Height (H) is the total height from top to bottom.
- ▶ Minimum wall embedment is 6" (150mm) or Height/20.
- ▶ Subsurface soils must be capable of supporting wall system.
- ▶ Unit core fill is 3/4" (20mm) clean crushed stone.
- ▶ Leveling pad is crushed stone base material.
- ▶ All backfill materials are compacted to 95% max. density.
- ▶ Finished grade must provide positive drainage.
- ▶ The symbol $\text{---} \textcircled{5.0'} \text{---}$ indicates location and length of geogrid as measured from the connection pins to the end of the geogrid.



NEAR VERTICAL WALL
(Minimum setback per unit)



ONE INCH SETBACK WALL
(1" min. setback per unit) (25mm)

▷ **STANDARD UNITS**

MAX. HGT.	BACKSLOPE			
	Level	4H:1V	3H:1V	2H:1V
Soil Type				
Sand/Gravel	5.2' (1.6m)	4.7' (1.5m)	4.6' (1.4m)	4.1' (1.2m)
Silty Sand	4.7' (1.4m)	4.3' (1.3m)	4.1' (1.2m)	3.6' (1.1m)
Silt/Lean Clay	4.4' (1.3m)	3.9' (1.2m)	3.7' (1.1m)	2.9' (0.9m)

▷ **STANDARD UNITS**

MAX. HGT.	BACKSLOPE			
	Level	4H:1V	3H:1V	2H:1V
Soil Type				
Sand/Gravel	6.8' (2.1m)	6.2' (1.9m)	5.9' (1.8m)	5.3' (1.6m)
Silty Sand	6.1' (1.9m)	5.5' (1.7m)	5.2' (1.6m)	4.4' (1.3m)
Silt/Lean Clay	5.3' (1.6m)	4.5' (1.4m)	4.1' (1.2m)	3.2' (1.0m)

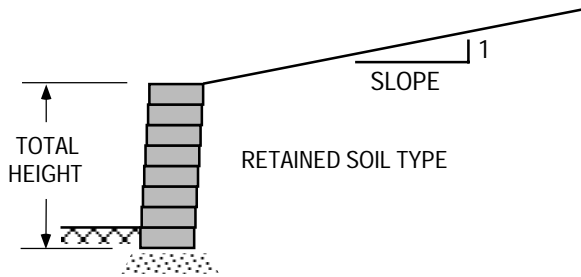
▷ **COMPAC UNITS**

MAX. HGT.	BACKSLOPE			
	Level	4H:1V	3H:1V	2H:1V
Soil Type				
Sand/Gravel	2.9' (0.9m)	2.6' (0.8m)	2.5' (0.8m)	2.3' (0.7m)
Silty Sand	2.6' (0.8m)	2.4' (0.7m)	2.3' (0.7m)	2.0' (0.6m)
Silt/Lean Clay	2.4' (0.7m)	2.1' (0.6m)	2.0' (0.6m)	1.7' (0.5m)

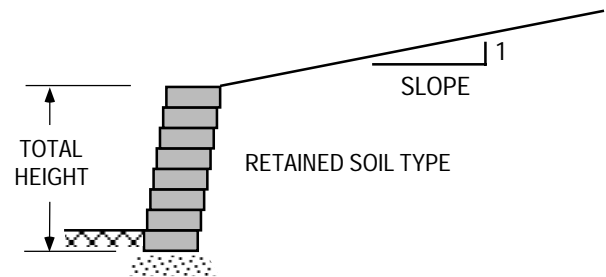
▷ **COMPAC UNITS**

MAX. HGT.	BACKSLOPE			
	Level	4H:1V	3H:1V	2H:1V
Soil Type				
Sand/Gravel	3.8' (1.2m)	3.4' (1.0m)	3.3' (1.0m)	2.9' (0.9m)
Silty Sand	3.4' (1.0m)	3.0' (0.9m)	2.9' (0.9m)	2.4' (0.7m)
Silt/Lean Clay	3.0' (0.9m)	2.7' (0.8m)	2.5' (0.8m)	2.1' (0.6m)

Notes: Calculations assume a unit weight of 120 lbs/cf (19kN/sqm) for all soil types. Assumed f angles for earth pressure calculations are: Sand/Gravel=34°, Silty Sand=30°, and Sandy Silt/Lean Clay=26°. Non critical structures with SF>1.5. No surcharge loadings are included. Surcharges or special loading conditions will reduce maximum wall heights. Sliding calculations assume a 6" (150mm) crushed stone levelling pad as compacted foundation material. The information provided is for preliminary design use only. A qualified professional should be consulted. Keystone accepts no liability for the improper use of these tables.



NEAR VERTICAL WALL
(Minimum setback per unit)



ONE INCH SETBACK WALL
(1" min. setback per unit) (25mm)

▷ **MINI UNITS**

MAX. HGT.	BACKSLOPE			
	Level	4H:1V	3H:1V	2H:1V
Soil Type				
Sand/Gravel	2.7' (0.8m)	2.5' (0.7m)	2.4' (0.7m)	2.1' (0.6m)
Silty Sand	2.5' (0.8m)	2.2' (0.7m)	2.1' (0.6m)	1.8' (0.5m)
Silt/Lean Clay	2.3' (0.7m)	2.0' (0.6m)	1.9' (0.6m)	1.6' (0.5m)

▷ **MINI UNITS**

MAX. HGT.	BACKSLOPE			
	Level	4H:1V	3H:1V	2H:1V
Soil Type				
Sand/Gravel	4.0' (1.5m)	3.9' (1.3m)	3.8' (1.2m)	3.6' (1.1m)
Silty Sand	3.5' (1.2m)	3.4' (1.1m)	3.3' (1.0m)	2.9' (0.9m)
Silt/Lean Clay	3.0' (1.1m)	2.9' (0.9m)	2.8' (0.8m)	2.2' (0.7m)

▷ **INTERMEDIATE UNITS**

MAX. HGT.	BACKSLOPE			
	Level	4H:1V	3H:1V	2H:1V
Soil Type				
Sand/Gravel	3.4' (1.0m)	3.1' (0.9m)	2.9' (0.9m)	2.6' (0.8m)
Silty Sand	3.0' (0.9m)	2.7' (0.8m)	2.5' (0.8m)	2.2' (0.7m)
Silt/Lean Clay	2.7' (0.8m)	2.4' (0.7m)	2.2' (0.6m)	1.9' (0.5m)

Notes: Calculations assume a unit weight of 120 lbs/cf (19kN/sqm) for all soil types. Assumed f angles for earth pressure calculations are: Sand/Gravel=34°, Silty Sand=30°, and Sandy Silt/Lean Clay=26°. Non critical structures with SF>1.5. No surcharge loadings are included. Surcharges or special loading conditions will reduce maximum wall heights. Sliding calculations assume a 6" (150mm) crushed stone levelling pad as compacted foundation material. The information provided is for preliminary design use only. A qualified professional should be consulted. Keystone accepts no liability for the improper use of these tables.